

Diego Vaz Bevilaqua

Museum of Life

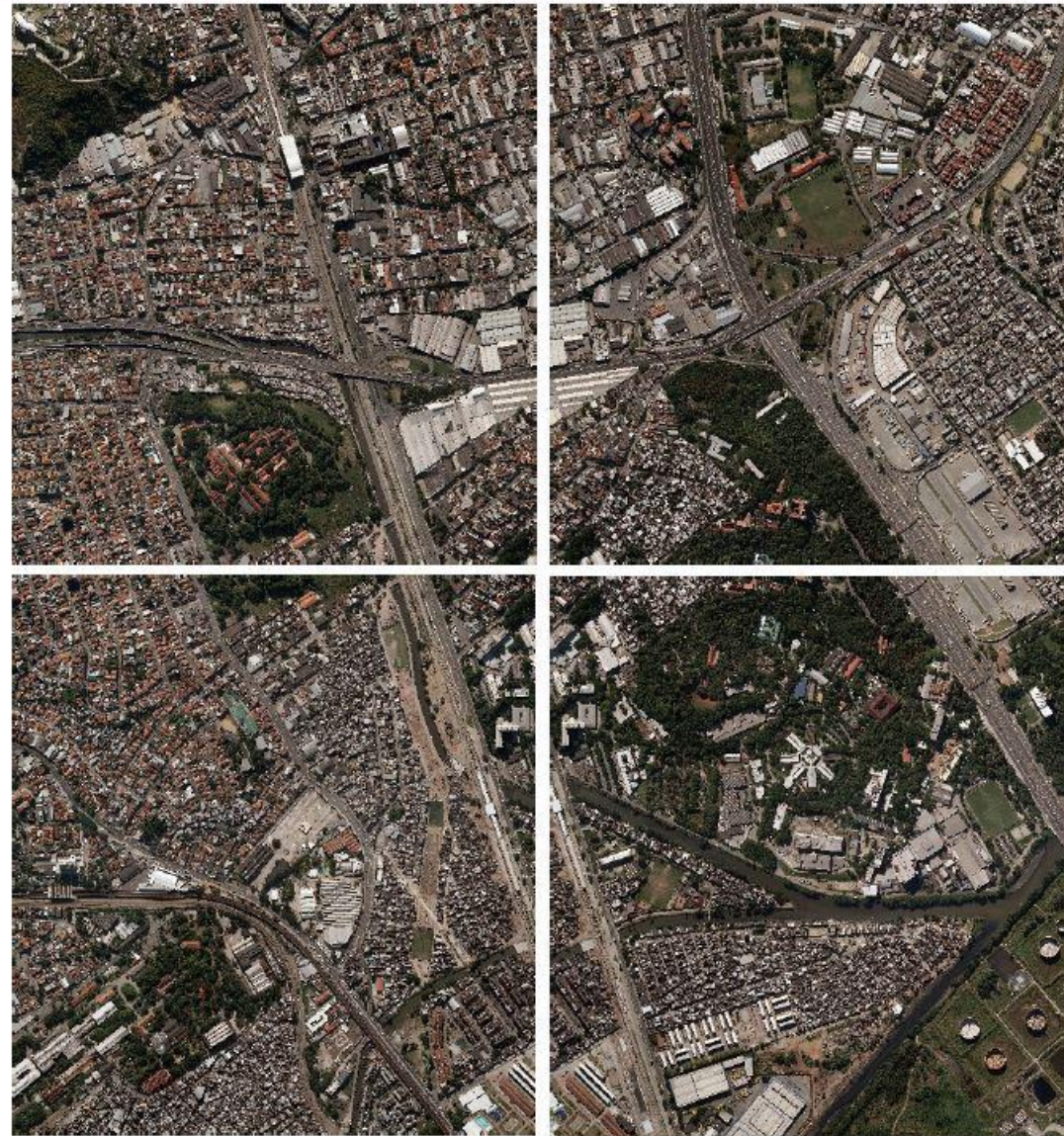
Rio de Janeiro, Brazil

Do I Belong? Identity and Diversity Issues in Science Centres

Diego Vaz Bevilaqua
diego.bevilaqua@fiocruz.br

Museu da Vida
Casa de Oswaldo Cruz
Fundação Oswaldo Cruz (Fiocruz)

Rio de Janeiro, Brazil



Timeline

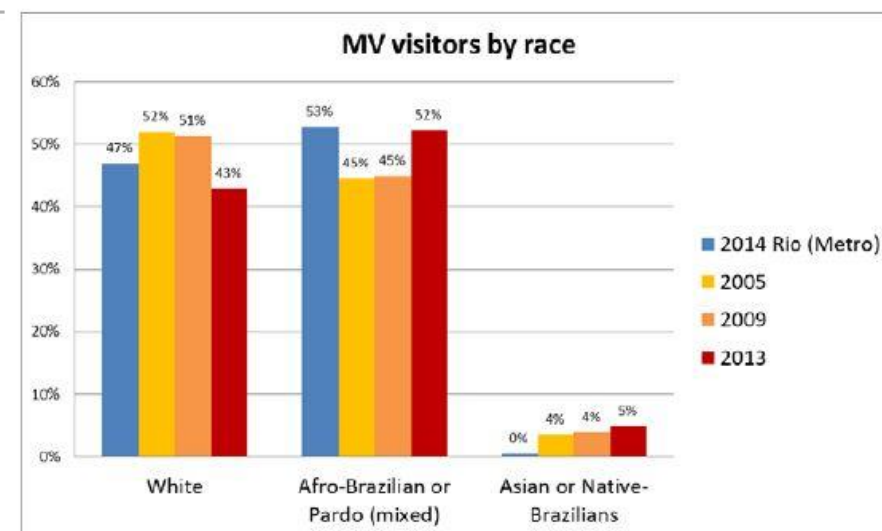
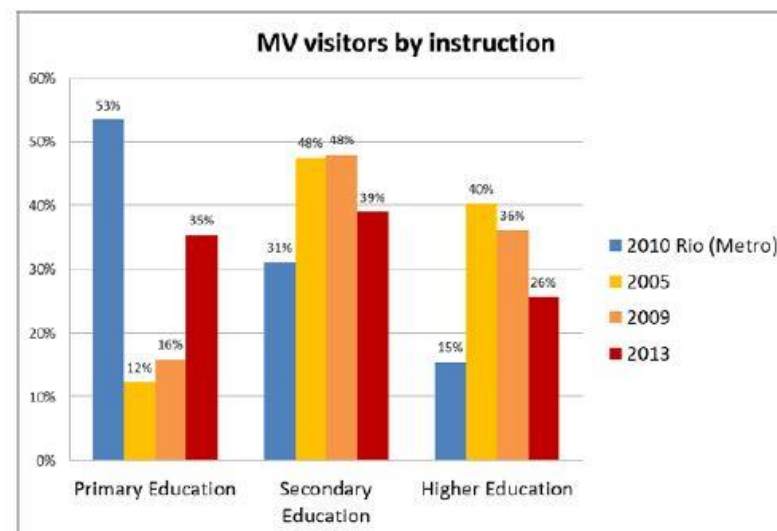
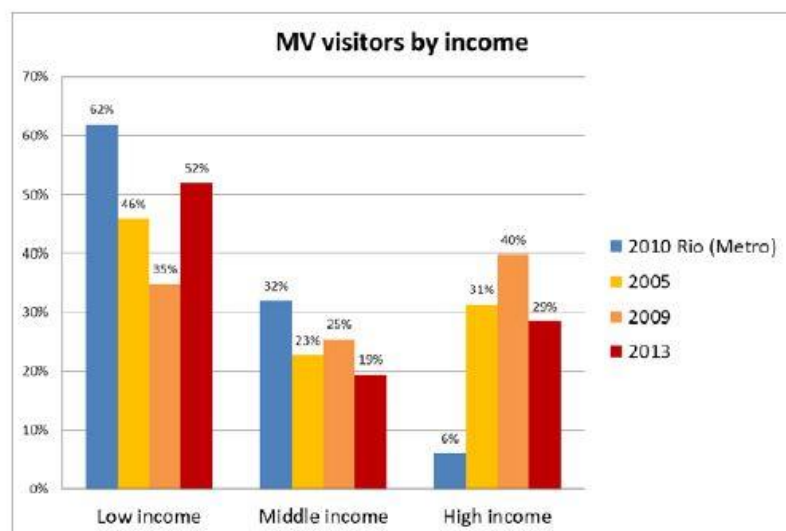
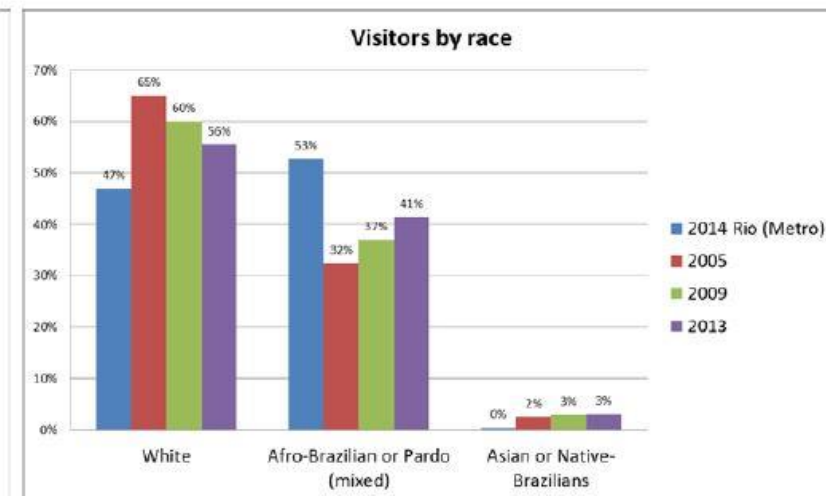
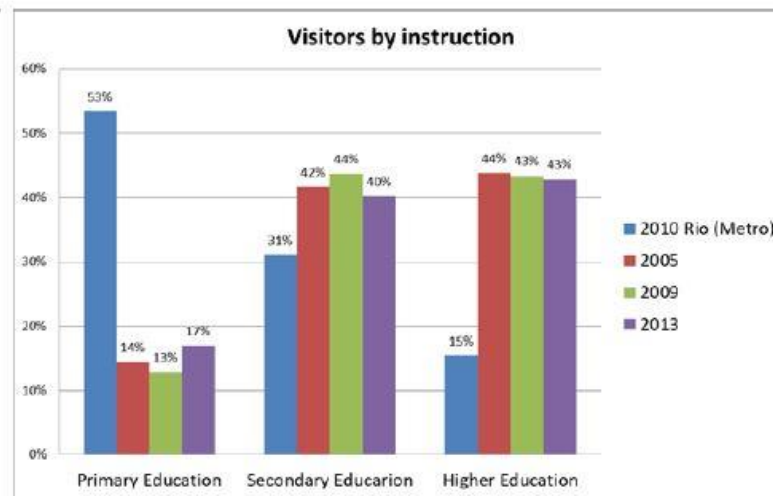
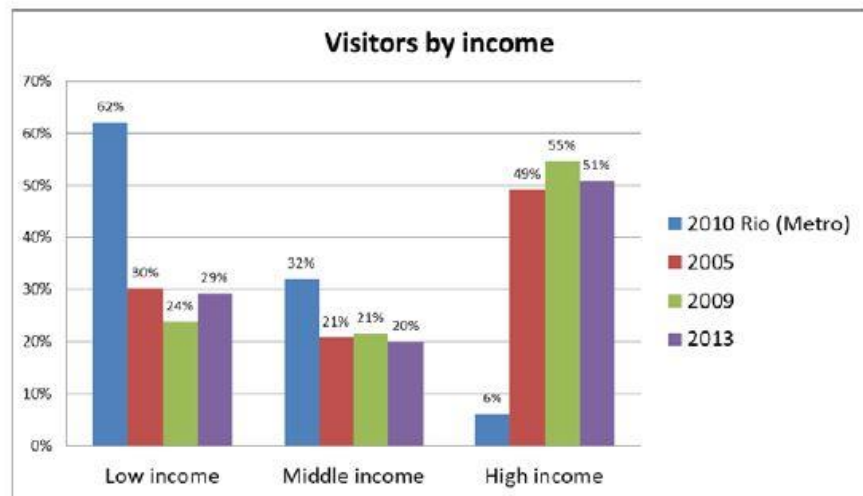
- 1999 - Museum opens
- 1999 - Mediation training course with local young community
- 2007 - “Weaving Webs” project: School-museum collaboration
- 2011 - “Young apprentices on cultural production”: a new model for local young training course
- 2013 - “Pro-cultural”: cultural production as a “ponto de cultura” (cultural landmark);
- 2013 - “Manguinhos: Entranced Territory”: Exhibition as a social technology
- 2013 - “Territorialized actions” as as part of regular educational activities
- 2015 - “Science Express” program
- 2016/2017 - New programs: Synnergene and WBT





What we learn?

- 🌟 Start with something that is central for your science center or museum. In our case, the explainers (or mediators);
- 🌟 Think of your museum as part of a territory. What's the history of its territory, its culture, its traditions?
- 🌟 Be local, hire local people, work with local problems;
- 🌟 **With local community, by the local community, for the local community;**
- 🌟 Have diverse people working in your museum;
- 🌟 Work with young audiences, work cross-generations;
- 🌟 Look for research: who's underserved in your territory?
- 🌟 What's local community knowledge;
- 🌟 Listen to your community;
- 🌟 Listen to your public;
- 🌟 **Museum as a mediator.**



Source: OMCC&T



Museu da Vida / Casa de Oswaldo Cruz / Fundação Oswaldo Cruz
Avenida Brasil, 4365 / Manguinhos / Rio de Janeiro / Brasil
+55 (21) 3865-2121 / museudavida@fiocruz.br

www.museudavida.fiocruz.br

 [facebook/museudavida](https://www.facebook.com/museudavida)

 [twitter/museudavida](https://twitter.com/museudavida)